

PORTRAIT OF A *NWLSD* GRADUATE



Our NWLSD Portrait of a Graduate is a key component of our Strategic Plan

OUR STUDENTS

As a district, we are committed to making sure that all of our students, Pre-K through 12th grade are prepared for whatever path they choose in life, whether it is enrollment, employment, or enlistment.

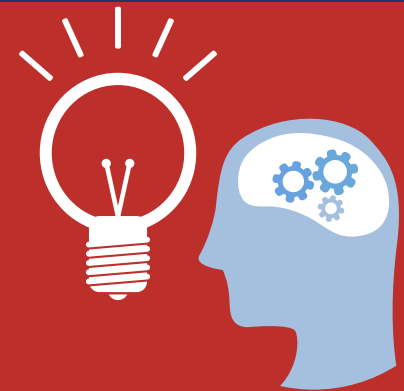


21ST CENTURY

Our students need rigorous academic content and to be equipped with 21st Century skills in order to thrive in this complex, rapidly changing world. There are numerous 21st century skills, but a few include things like: adaptability, effective communication, problem solving, leadership, empathy, open mindedness, integrity and dependability.

FUTURE LEADERS

We want to ensure that our student body is equipped with the skills they need to be contributing citizens in our world, regardless of which path they choose in life. Upon graduation, we want our learners to be prepared for their next steps, whether they are enrolled, employed or enlisted.



OUR COMMUNITY

NWLSD is collaborating with board members, parents, staff, communities of faith, business and community leaders, policy makers, social service agencies, educators, universities and students to develop our Portrait of a Graduate. When complete, our Portrait of a Graduate will be a North Star to guide our school district's learning experiences and instructional design in and out of the classroom, in order to take steps to further develop our students into tomorrow's leaders.

